

Putting the sling on:

- Your Peanut Shell™ will arrive ready to use. It will be folded in half and ready for you to put on.
- Which ever side you want to carry your baby- put that arm through the sling and place the Peanut Shell™ up and over your head (like a sash) to rest on the opposite shoulder.
- The sling should now be resting on your right shoulder and left hip (or left shoulder and right hip if that is more comfortable for you) with the seam & pocket a few inches closer to your belly button.
- Smooth out the fabric so that it is evenly distributed and laying flat across your back and shoulder.

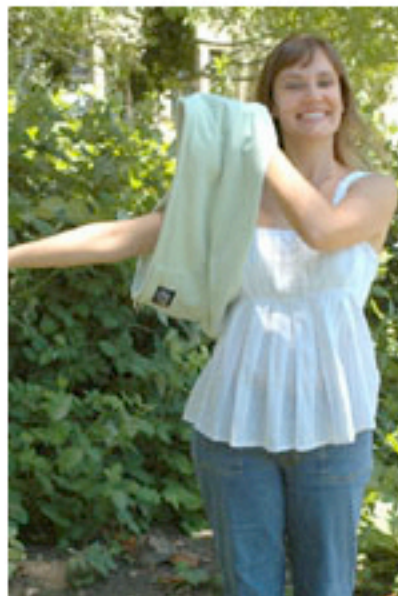
See below pictures for help:



1. Sling open (not folded)



2. Sling folded and ready to put on



3. Slide arm through sling



4. And over your head



5. Pouch opening
(where baby will go)



6. Sling on correctly